

**Motor Mechanics** (£130 per session)

Discover how to work on a variety of engines and general vehicle related engineering.

**Woodwork**

Discover the safe use of tools, core carpentry skills and construction projects.

**Health & Fitness**

Discover how to keep yourself fit and active through both a healthy diet and safe exercise.

**Survival Skills** Based on Forest School Ethos

Discover the world around you through learning how to light a fire, outdoor cooking, campcraft and other survival skills.

**Boxing @ Peak Performance**

Discover how far you can push yourself, how disciplined you can be and learn how to train like a pro!

**Hairdressing**

Discover how to safely use equipment to wash, cut and style your clients hair.

**Beauty**

Discover how to use and apply different beauty products to your clients.

**Climbing @ White Spider**

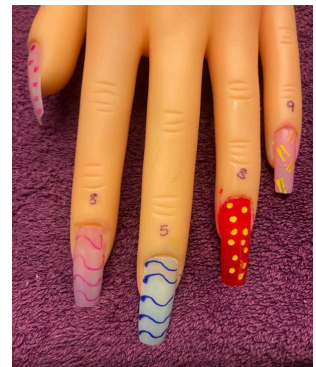
Discover how to climb like a professional on tailor-made climbing walls whilst learning new techniques and pushing yourself to new heights!

**Arts & crafts @ Craft My Day**

Work in a local studio to discover what creative medium you most enjoy.



✉ **BOOKING FORM**



- ✓ 1:1 or small groups
- ✪ KS3 & KS4
- 📅 Days & Times by arrangement
- 📍 Southwood, KT5 9NA
- 🏆 Work towards AQA Unit Awards & other qualifications
- £ £65 per session

Contact James Cawthorn to discuss creating a bespoke, accessible curriculum for your students with SEMH needs.

07375 887976

[stjc@maldenoaks.rbksch.org](mailto:stjc@maldenoaks.rbksch.org)

📷 @mo\_discover

📷 @maldenoaksoutdoors